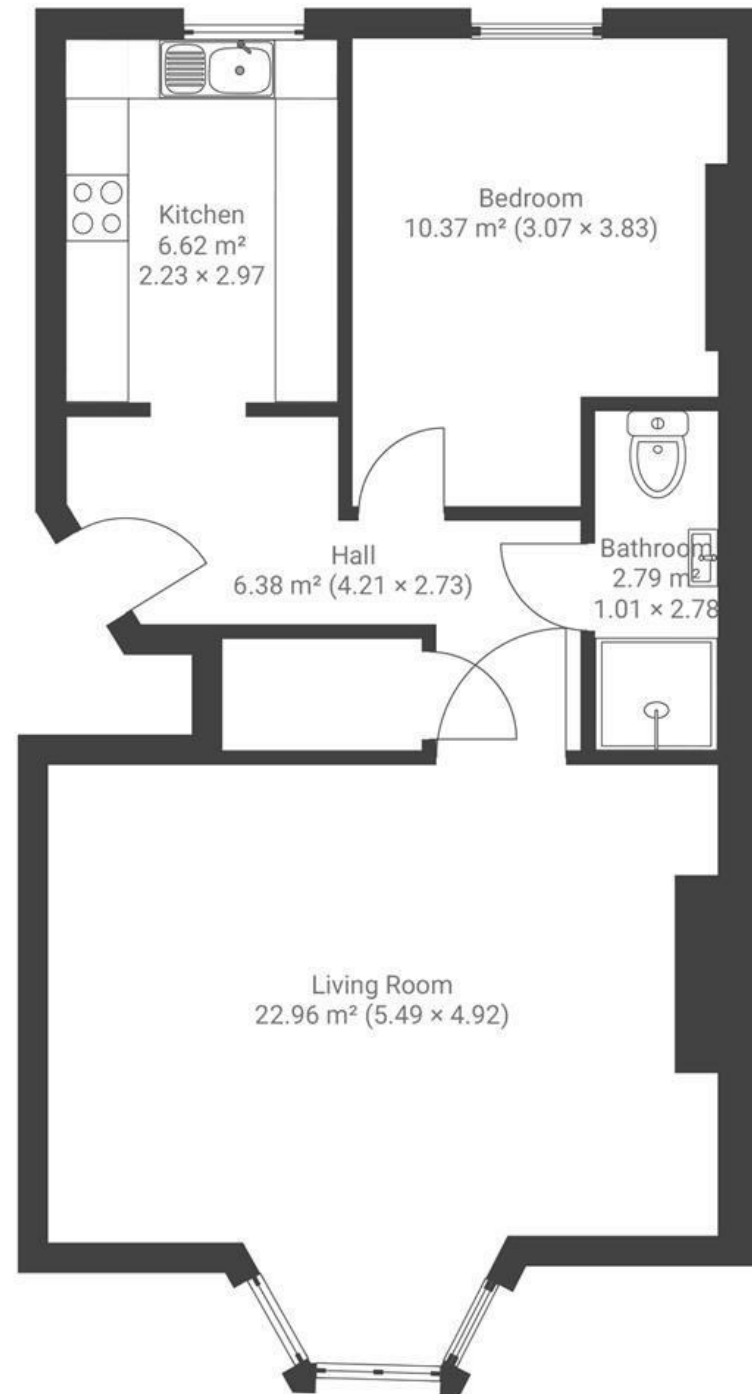


Coronation Road

BEDMINSTER

APPROXIMATE FLOOR AREA
53 SQM / 570 SQFT



Boardwalk

Coronation Road

SOUTHVILLE, BRISTOL



£310,000



1 Bedrooms



BS3 1AT



1 Bathrooms

" This has been a perfect first home – it's full of character, feels spacious for a 1-bedroom flat and the private garden gives you an important space to relax during the summer months. We have fully re-fitted both the bathroom and kitchen, keeping the character feel but modernising appliances. We are particularly fond of the archway into the kitchen and the built in shoe-storage area. The location is amazing, walking distance and easy access to everything Bristol has to offer. "

